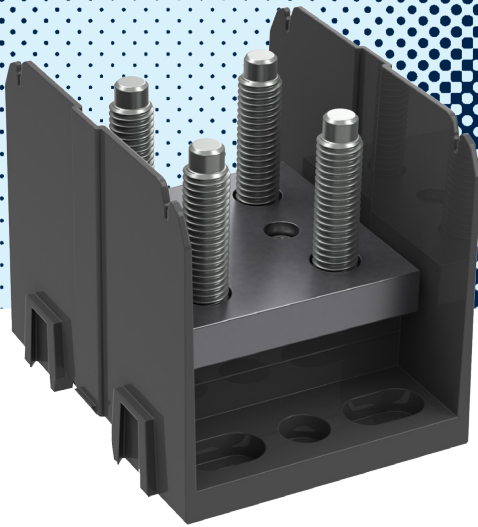


## Product Data Sheet

# HVPB214

Add suffix "CH" for snap-on  
hinged cover

Power Terminal Block



## 1500 Amps 1500 Volts AC/DC

### Wire Range

- Line and Load: (2) 1/2" studs
  - Suitable for listed lugs or flexible bus bar
  - Lugs must fit on 1/2" studs, 1.50" (38.1 mm) max width

### Electrical Ratings

- 1500 amps with prepared wire
- 985 amps with flexible bus bar
- Voltage:
  - 1500V per UL 1059 class E & CSA 22.2 No.158, class C requirements
  - 600V per UL 1059 service & industrial class (B, C & E) requirements
  - 600V per CSA 22.2 no.158 service & industrial class C requirements
- Short circuit current rating (SCCR) - see table below
- Factory & field wiring

### Agency Compliance

- UR - UL recognized terminal block, evaluated to UL 1059, file no. XCFR2.E62806
- cUR - UL evaluated to CSA 22.2 no.158, file no. XCFR8.E62806

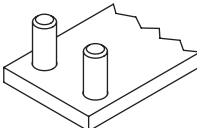
### Material Information

- Insulator base:
  - Thermoplastic
  - Flammability rating of insulator base UL94V0
  - Insulator base temperature rating: -40°C to 110°C (UL RTI)
- Connector - copper, tin plated
- Anchor screws - steel, zinc plated
- Terminal studs - steel, zinc plated
- Hardware - nuts, flat washer, Belleville washer - steel, zinc plated
- RoHS compliant

A Regal Brand

**REGAL**

## Termination Specifications

Line/Load Side	Termination Type	Torque	Stud Length	Maximum Lug/Bar Width
	Listed lugs or flexible bus bar on 1/2" studs	56A N·m / 500 lbf·in	37.1 mm / 1.46"	39.8 mm / 1.55"

- For use with conductors prepared with Listed connectors such as single hole compression/crimp lugs or listed ring, fork or spade terminals.
- Conductor size, ampacity, temperature rating and type are dictated by the ratings of the listed lugs utilized and applicable code requirements.
- For information on copper stranded wire classes please reference:  
<http://www.marathonsp.com/CatalogPDFs/Flexible-Stranded-Wire.pdf>

## Short Circuit Ratings

Suitable Conductor kcmil/AWG or Prepared Flexibar		Overcurrent Protection Device	SCCR, RMS	Volts, Max
Line	Load			
500 - 2/0	500 - 2/0	no OCPD	25kA	480
*10 x 63 x 1 to *4 x 32 x 1	*10 x 63 x 1 to *4 x 32 x 1	no OCPD	25kA	480

\*Flexibar

